

# Studio 13 Ann Parker

## 1 Walder Cres Avoca Beach

[annjparker.com](http://annjparker.com)



Ann, whose work has appeared on several occasions in Australian Artist Magazine, is an award winning artist with over 25 years experience, holding an Associate Dip. Fine Arts.

Ann is also a dedicated teacher with a philosophy that a sound foundation and understanding of materials and fundamental techniques will assist in the freedom to develop independent creativity.

Working in a diverse range of mediums, which includes Oils, Pastels, Acrylics and Collage, Ann describes her style as “conceptual representational art”, with a focus on figurative works and portraiture



**ART STUDIES:** Associate Diploma in Fine Arts (major – Painting, Minor - Fine Arts Photography) Hornsby TAFE

### CAREER HISTORY

**2002 to**

**Present:** Private classes & workshops in her own studio.  
Arts Tutor for Ettalong Beach Arts Centre.

**2003:** ‘Youth Art Start Program’ Arts Mentor for Central Coast

**1998 - 2006:** Independent Muralist – Commissioned Murals.

**1995 - 1997:** Collaboration in the formation and operation of Murals Inc. - Commissioned Murals

**1990 - 1992:** Lindann Studio & Gallery – Gallery Owner.



### SELECTED EXHIBITIONS & PUBLICATIONS:

**2011/08/07** Australian Artist Magazine

**2010** Plein-air Girls Exhibition – Shoalhaven Regional Art Gallery

**2010** Solo Exhibition Gosford Regional Gallery

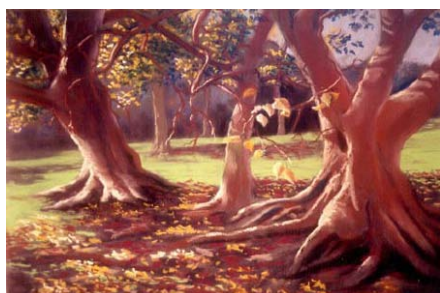
**2008/11** Portrait Prize, Kariong

**2006/7** Gosford Art Prize

**2006** Winter Flare Spectrum Gallery, The Rocks Sydney.

**2004** Who Portrait Exhibition, Gosford Regional Gallery

**1998** Parliament House, Canberra Bi-Centennial Peoplescape exhibition (Commissioned by Gosford Council to represent Gosford City.



### AWARDS:

**2008** Artist of the Year Kincumber Art Show

**2003** Highly Commended, Dubbo 20<sup>th</sup> Biennial Exhibition

**1995** Highly Commended, Gosford District Show

**1991** Highly Commended, Lidcombe Art Society

**1990** Highly Commended, Lidcombe Art Society

**1990** Trophy Prize 16<sup>th</sup> Annual Roselands Art Show